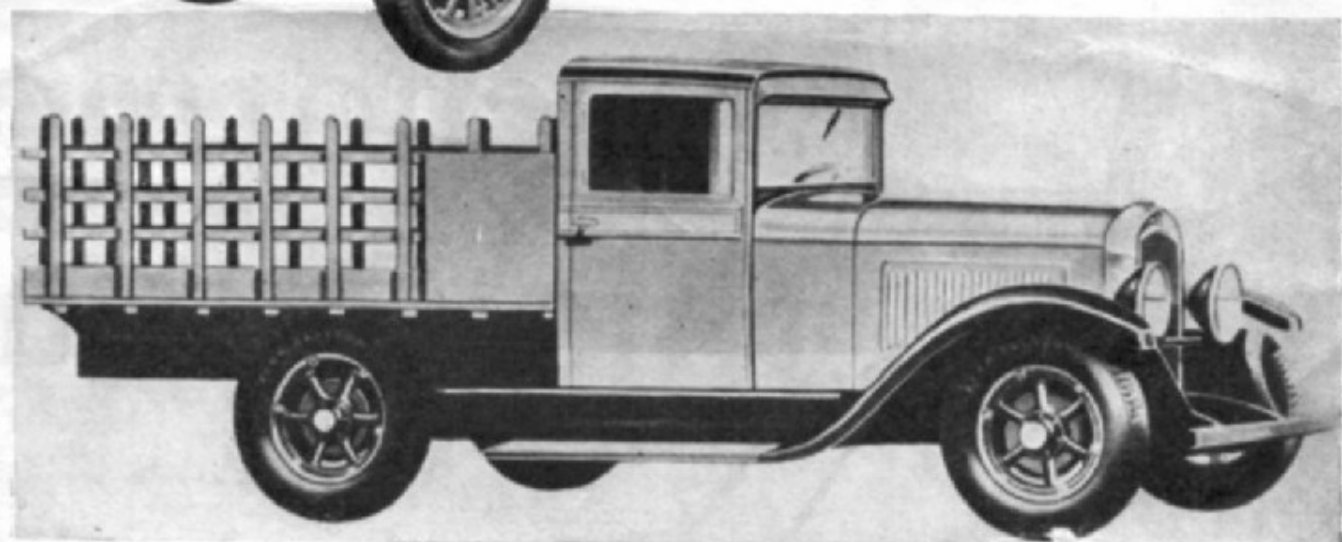
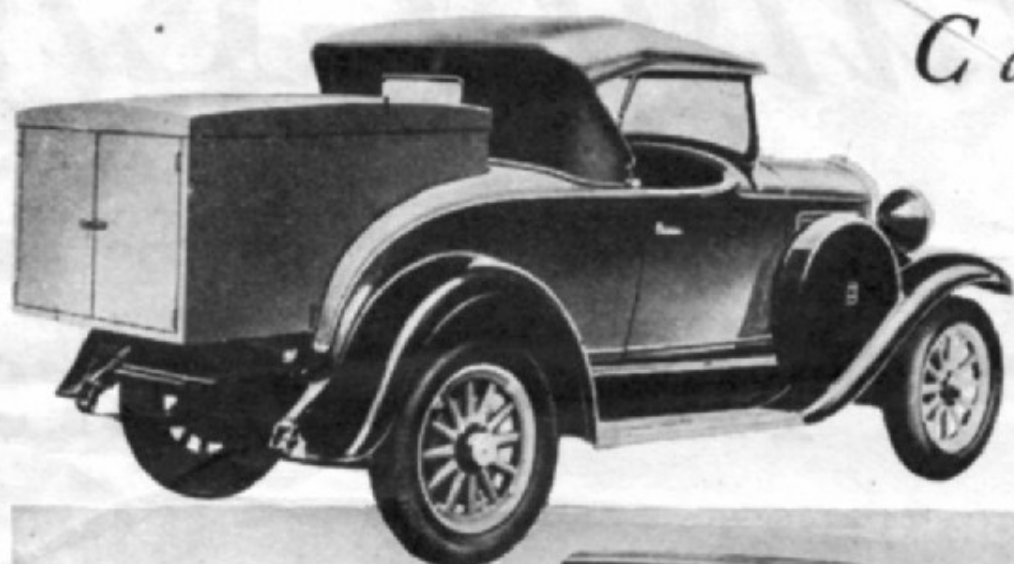
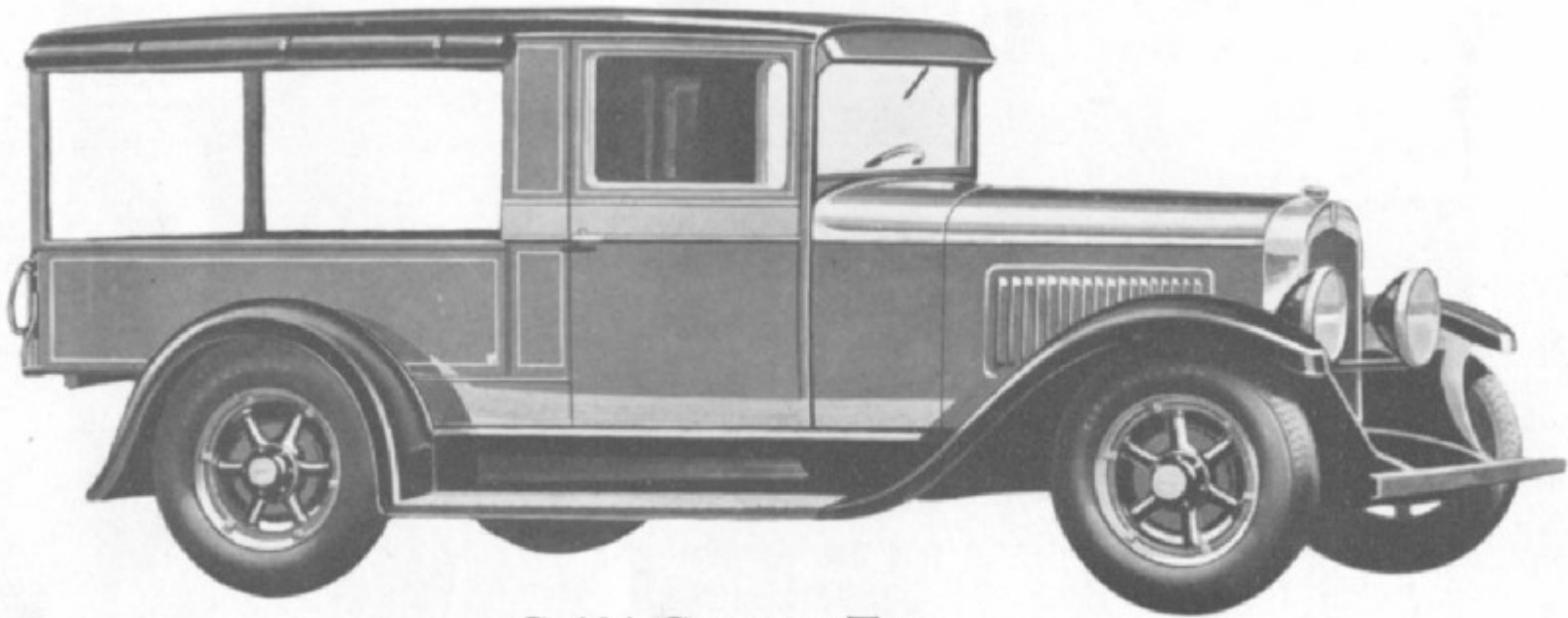


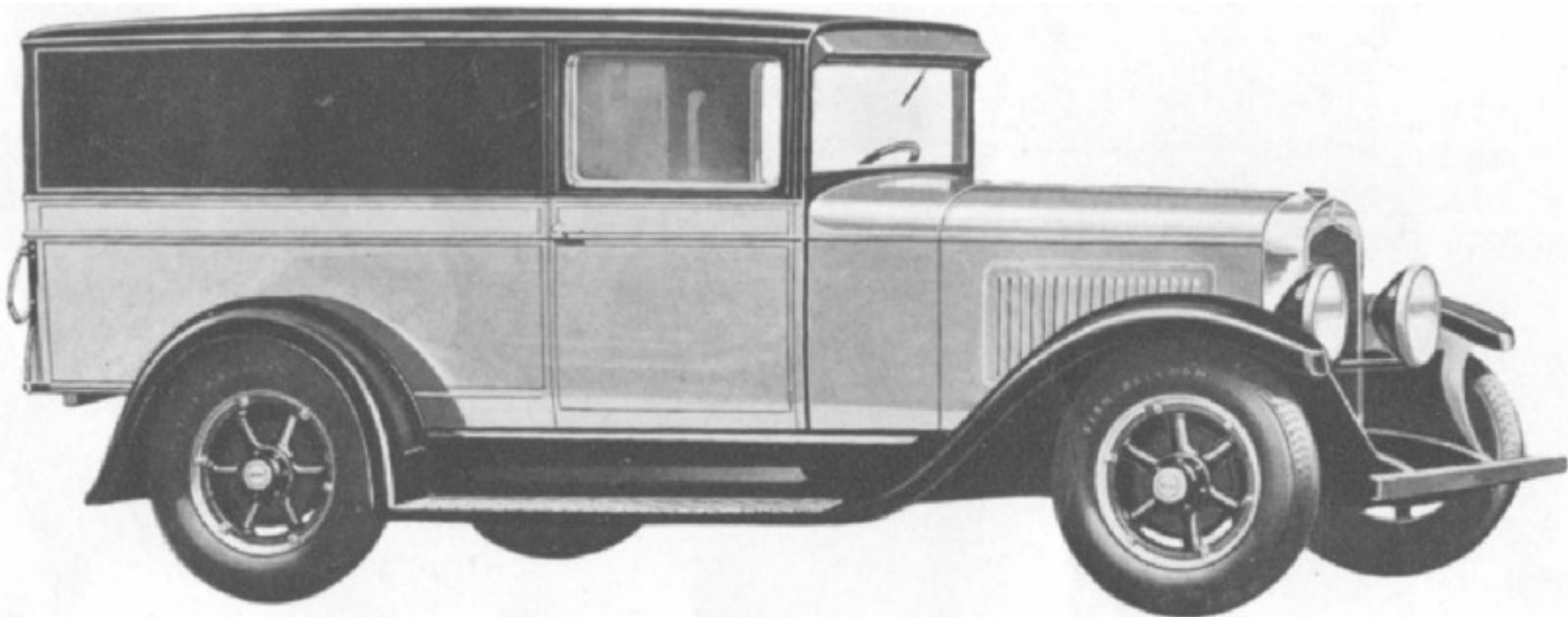
Whippet Commercial Cars



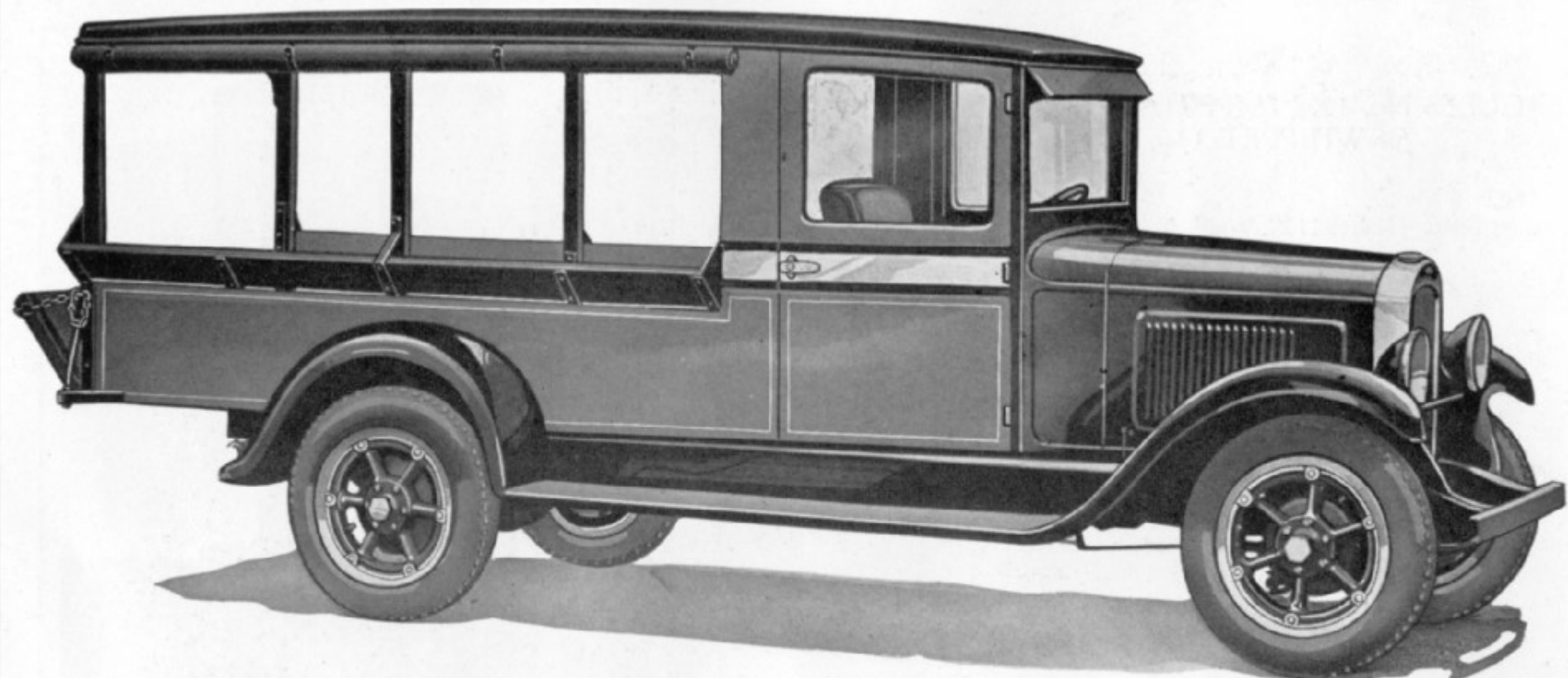
THE Willys-Overland Co. has recently brought out a commercial line of Whippet fours and sixes fitted with a wide range of bodies. The four has an allowable gross weight of 3100 pounds which includes the vehicle complete with load. Tires are 30 by 5 and the wheelbase is 103 $\frac{1}{4}$ inches. The six-cylinder Whippet is described as a 1 $\frac{1}{2}$ -ton vehicle with a gross allowable weight of 7000 pounds. The wheelbase is 131 inches and a four-speed transmission is fitted. The price of the four-cylinder chassis is \$380 while the six sells for \$645. Both are completely equipped including cab, shock absorbers, finger-tip control, windshield wiper, etc. The illustrations indicate the wide range of body types from the Whippet four roadster with slip-on box to the 1 $\frac{1}{2}$ -ton six with stake body.



C-101 Canopy Top



C-101 Panel Body



HERCULES No. 1211 CANOPY TOP EXPRESS BODY
for WHIPPET 1½ TON TRUCK

*Loading Space—Length 112", Width 50", Width between Wheelhouse 45¼",
Maximum Height 55", Height of Side Panels 14½"
Approximate Weights—Net 960 lbs., Crated 1448 lbs.*

Code Word: WRITE

*Finished in a rich shade of green lacquer with harmonizing colored belt
panel and appropriately striped*

When specified, padded side seats and backs (Jitney Seats) can be supplied at an additional cost. Seats can be raised when hauling merchandise.

