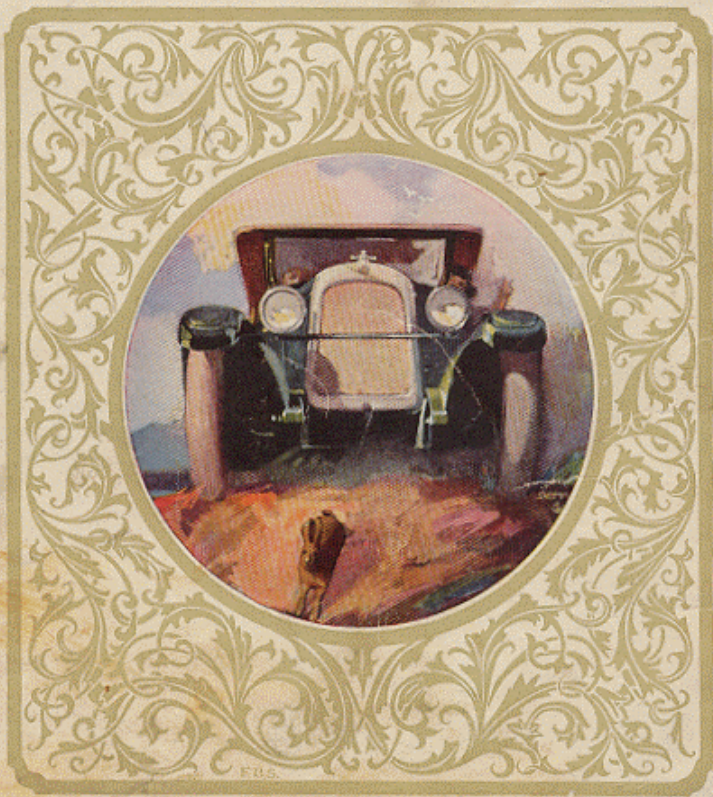


1925 - 1926 Overland 93 Color Sales Brochure

(Thanks to John Stokes, WOKR # 659 for scanning these images for all to enjoy)

The Fine New
OVERLAND
with SIX cylinders



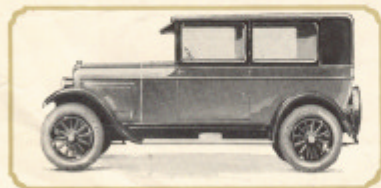
Distinction
of a kind that arrests all eyes



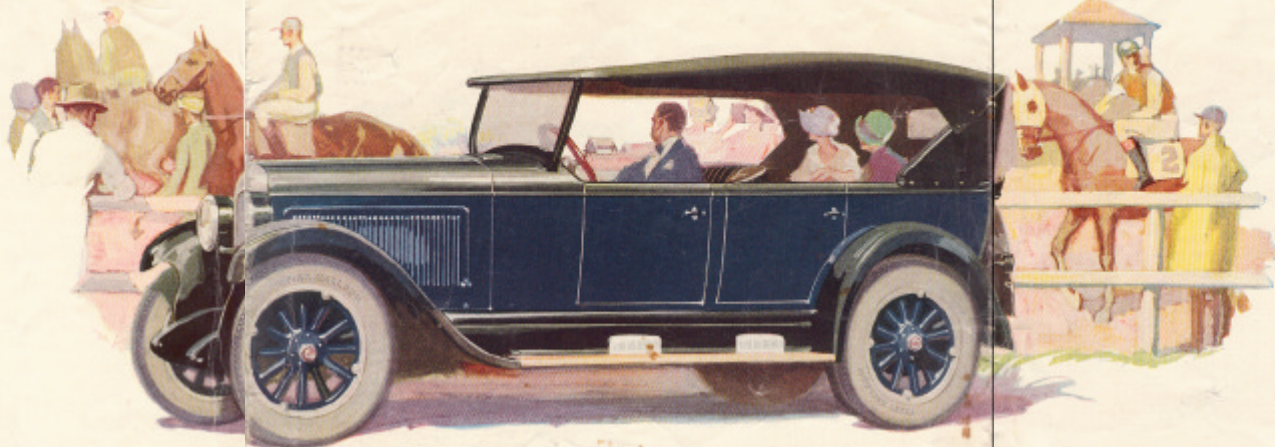
With top lowered and enclosed in a snug-fitting, rubberized boot, the low, easy lines of this car are even more clearly defined.



View of motor driving compartment, showing ample room and ample windshield, excellent visibility, and simplicity of instrument board. Steering wheel, pedals and control levers are arranged to provide maximum comfort for the driver.



Overland Six-Cylinder Standard Sedan. — Roomy comfort for the passengers. Two assembly seats in front and rear, middle and rear. Body below head finished in Green Gray laque; above head, in Forbes Gray laque.



The Fine New Overland with Six Cylinders

Super-Abundant Power and Perfect Balance

THE new six-cylinder Overland is, in every sense, an automobile of quality, newly designed to meet a definite need. It is built to fulfill an ideal that of offering a truly remarkable car, graceful, powerful, dependable and economical, at a reasonable price.

Months of searching have established its ability to perform far greater feats of power and endurance than will ordinarily be required of it. It has stamina to bear up under the most grueling use, and to continue to render satisfaction throughout years of every-day operation.

Its performance arouses an intense pride of ownership. It has power to take steep hills on its, to plow through deep mud or sand, to throttle

down to a snail's pace in congested traffic, or to accelerate quickly and smoothly when required. Comfort is inherent in this new Overland. A low center of gravity makes for steadiness at all speeds. Long, flexible springs, assisted by snubbers, smooth out the roughest highway. Ample seating space and leg room, low reclined seats and deeply cushioned upholstery offer complete relaxation to passengers.

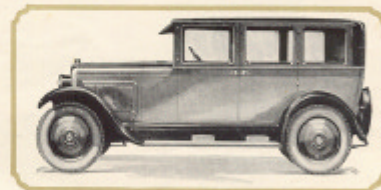
Style and beauty are clearly the outward attributes of this new car. Long, low, graceful body lines; rich, harmonious colors and gleaming nickel hardware combine to identify this new six-cylinder Overland as a true aristocrat of the boulevards.



Steering column and top line are encased in a handy case, passenger back sets back of front seat, when they are easily accessible, and protected from damage.



View of spacious rear compartment for three passengers. Folded seats, deep cushions and ample leg room prevent fatigue on long journeys.



Overland Six-Cylinder De Luxe Sedan. — A beautiful four-door closed car in which quality is eminently higher than price. Body finished in Overland color variation, Akshon Gray below head and Herring Gray above.

A FINE ENGINE

*is the Fountain-head of Fine
Performance*

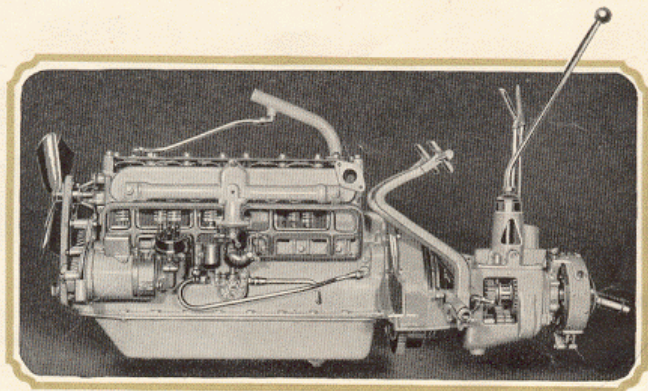
THIS new Overland-built, six-cylinder power plant, with its carefully balanced and proportioned parts furnishes an abundance of eager power—and delivers this power without vibration. Detail by detail, this engine will bear the closest scrutiny in design, materials and workmanship.

In lieu of the conventional metal timing gears common to cars of this class the new Overland Six has a fabric timing gear, long-wearing and permanently silent.

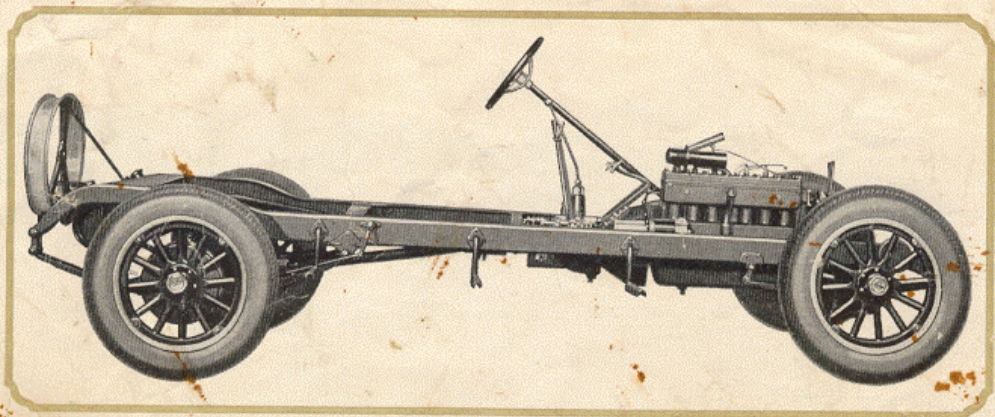
Instead of ordinary cast iron pistons, the Overland Six has pistons of die-cast aluminum—lighter, better fitting, more efficient—conforming to standards carried out in very expensive cars.

Engine, clutch and transmission are a unit, completely enclosed, for protection against mud and dirt. Lubrication is by force feed—the clutch is an 8-disc design of velvety action, and transmission gears are of fine alloy steel.

The perfect balance and co-ordinated harmony of all reciprocated parts endows this engine with extraordinary vitality and endurance. Its simplicity and smoothness are reflected in outstanding performance and also in a degree of endurance, long life and economy that is a delight to all owners.



Overland Six Motor cut out to show more detail.



Specifications

Engine—Six-cylinder; 3-inch bore; 4-inch stroke. Cylinders and crankcase monobloc casting; cylinder head separate casting. Crankshaft drilled for lubrication. 38-brake horse-power.

Lubrication—Force feed for crankshaft and connecting rod bearings; spray for pistons and valve action.

Clutch—Multiple disc type, which assures velvety, smooth action. Entirely enclosed and protected from dust and grit.

Transmission—Selective sliding-gear type; three speeds forward and one reverse. Special carbon steel gears.

Rear Axle—Semi-floating; with removable driving shafts. Differential case cast in one piece, permitting unusually large pinion gears. Drive

and ring gears are of nickel steel, noiseless spiral bevel type.

Electric System—Auto-Lite, double unit, six-volt starting and lighting system, with Bendix drive on starting motor. U. S. L. Battery.

Brakes—Foot, contracting on 12-inch drums on rear wheels. Hand, contracting on drum on drive shaft. Very large braking surface—177 square inches.

Springs—Chrome vanadium steel, semi-elliptic. Front springs 34 $\frac{3}{4}$ inches long; rear springs 52 $\frac{1}{2}$ inches long—amazingly buoyant.

Equipment—Complete set of tools; oil gauge, ammeter, magnetic speedometer, instrument lamp mounted on instrument board; jack, tire pump, motor-driven horn. (Top Boot on Touring Car.)

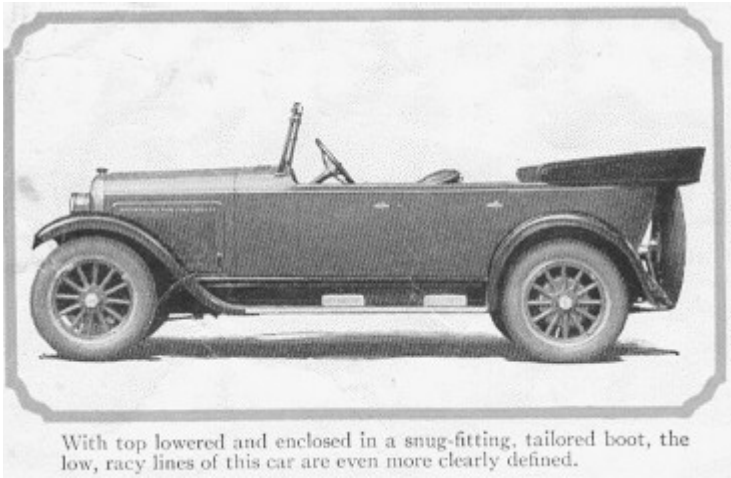
We reserve the right to change prices and specifications without notice.

The new six-cylinder Overland is also available with two-door and four-door Sedan bodies for those who prefer a closed car.

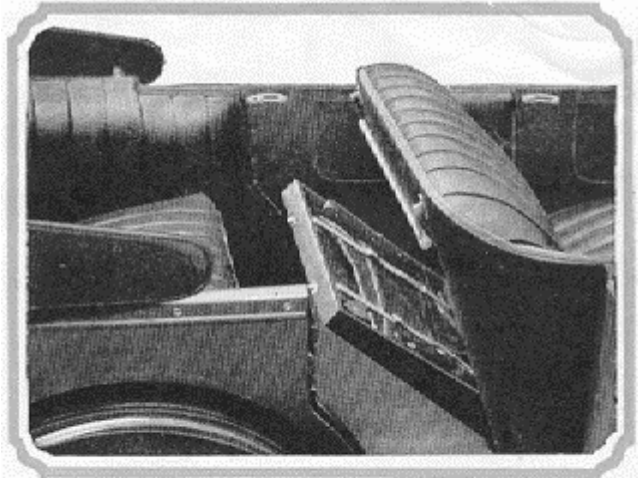
THE JOHN N. WILLYS EXPORT CORPORATION
TOLEDO, OHIO

WILLYS-OVERLAND CROSSLEY, LTD.
STOCKPORT, ENGLAND

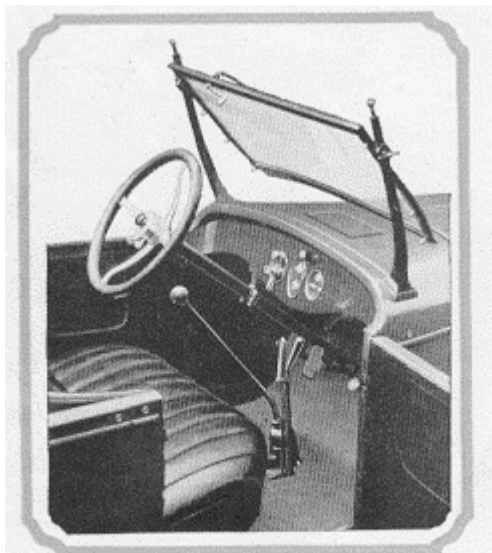
Small Photo Detail from Center Page of Brochure



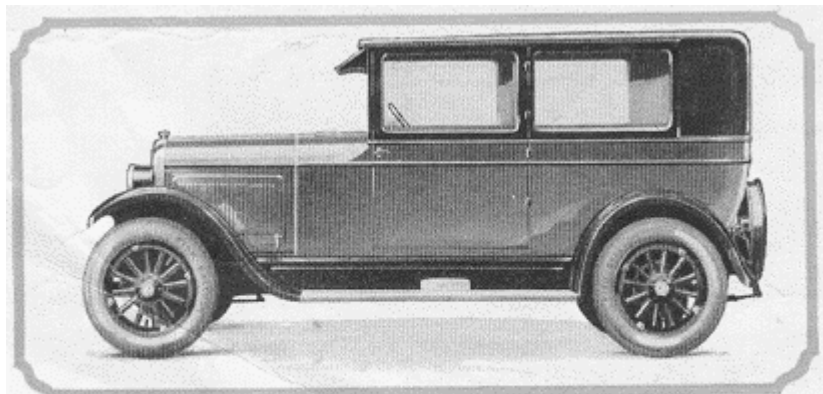
With top lowered and enclosed in a snug-fitting, tailored boot, the low, racy lines of this car are even more clearly defined.



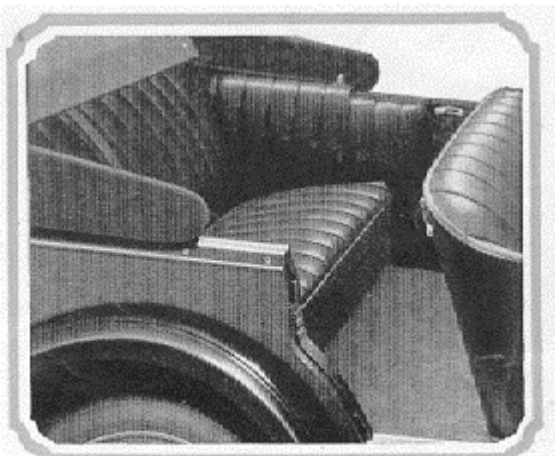
Storm curtains and top boot are carried in a handy compartment built into back of front seat, where they are easily accessible and protected from damage.



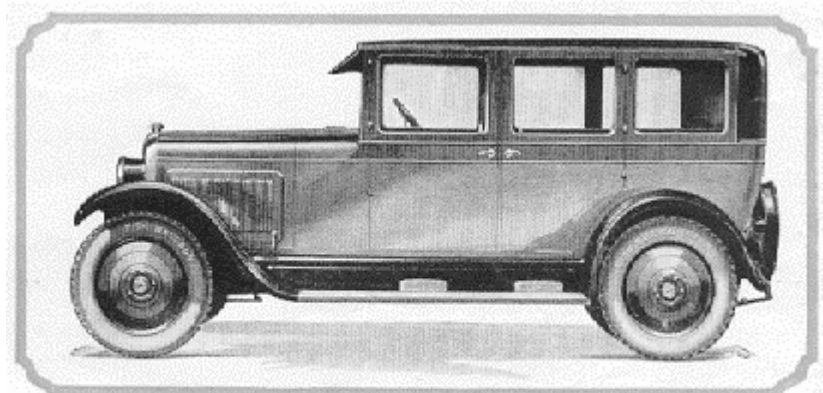
View of roomy driving compartment, showing one-piece adjustable windshield, cowl ventilator, and simplicity of instrument board. Steering wheel, pedals and control levers are arranged to provide maximum comfort for the driver.



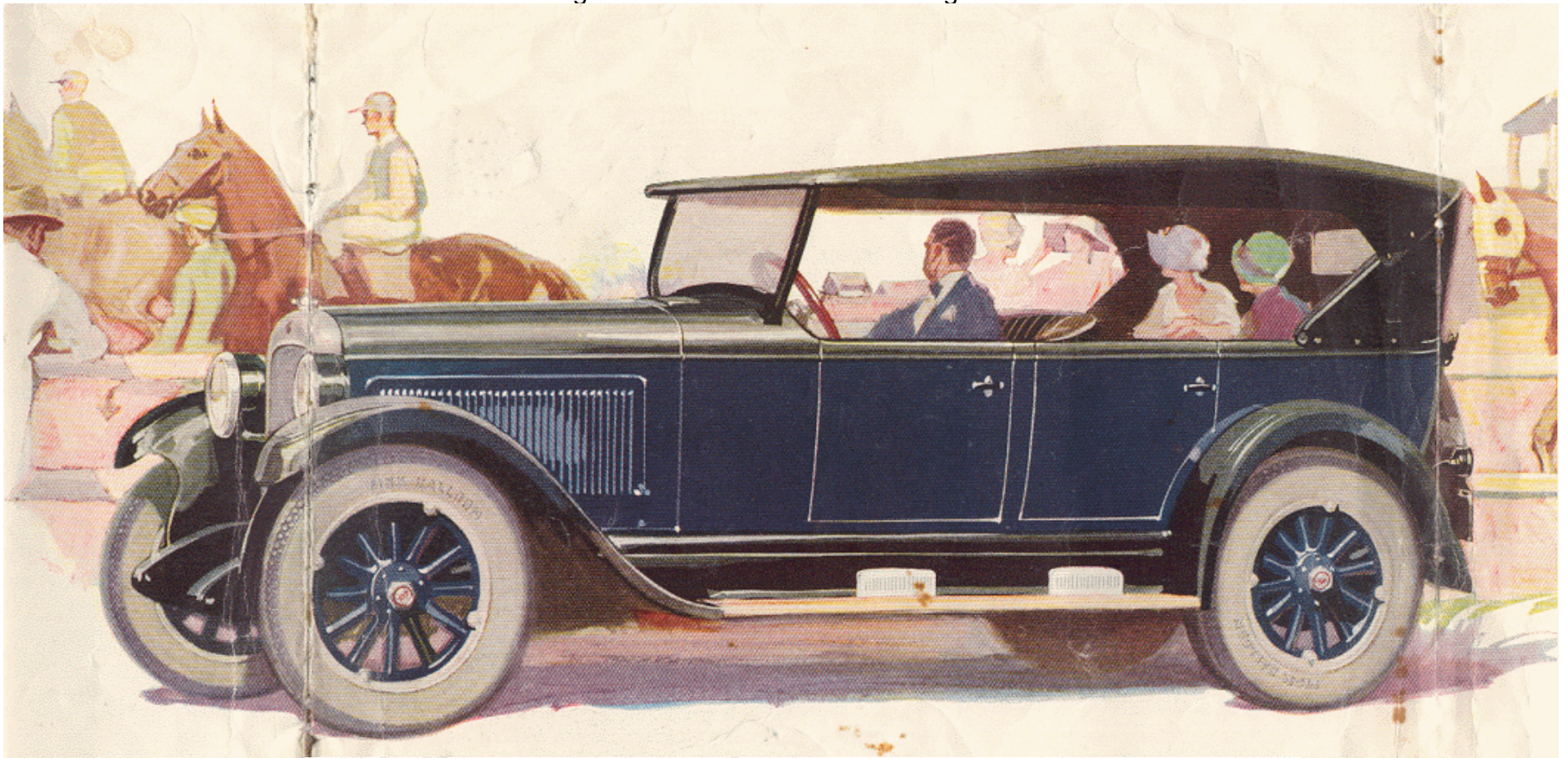
Overland Six-Cylinder Standard Sedan. Roomy comfort for five passengers. Two unusually wide doors afford easy entrance and exit. Body below bead finished in Cairo Gray lacquer; above bead, in Thebes Gray lacquer.



View of spacious rear compartment for three passengers. Reclined seats, deep cushions and ample leg room prevent fatigue on long journeys.



Overland Six-Cylinder De Luxe Sedan. A luxurious four-door closed car in which quality is eminently higher than price. Body finished in two-tone color varnish: Alpine Blue below bead and Robson Gray above.



The Fine New Overland with Six Cylinders

Super-Abundant Power and Perfect Balance

THE new six-cylinder Overland is, in every sense, an automobile of quality, newly designed to meet a definite need. It is built to fulfill an ideal—that of offering a truly remarkable car, graceful, powerful, dependable and economical, at a reasonable price.

Months of searching test have established its ability to perform far greater feats of power and endurance than will ordinarily be required of it. It has stamina to bear up under the most gruelling use, and to continue to render satisfaction throughout years of every-day operation.

Its performance arouses an intense pride of ownership. It has power to take steep hills on high, to plow through deep mud or sand, to throttle

down to a snail's pace in congested traffic, or to accelerate quickly and smoothly when required. Comfort is inherent in this new Overland. A low center of gravity makes for steadiness at all speeds. Long, flexible springs, assisted by snubbers, smooth out the roughest highway. Ample seating space and leg room, low reclined seats and deeply cushioned upholstery offer complete relaxation to passengers.

Style and beauty are clearly the outward attributes of this new car. Long, low, graceful body lines; rich, harmonious colors and gleaming nickel hardware combine to identify this new six-cylinder Overland as a true aristocrat of the boulevards.